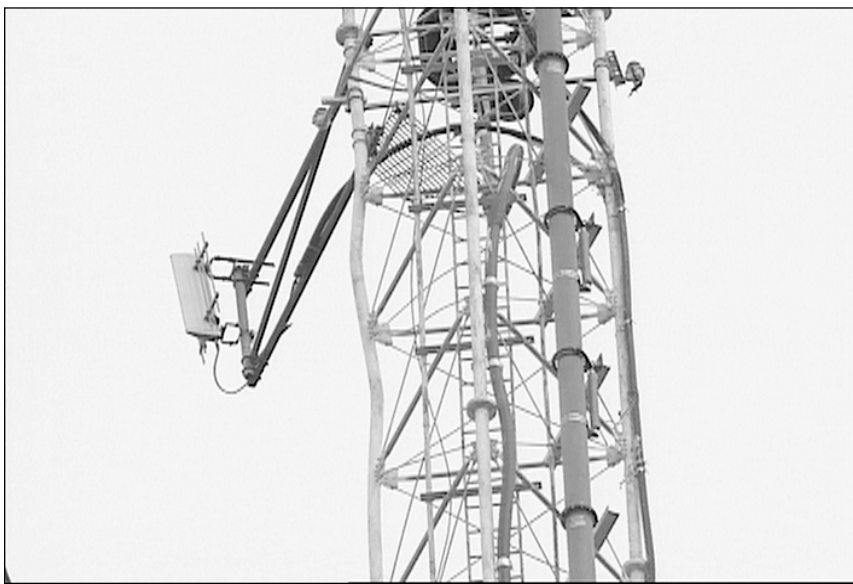


Plane Hits Tower, Station Off



It's a miracle that the tower didn't fall!

Pittsburgh market station, WNPB-TV24, Morgantown, was knocked off the air when a small plane, a Piper PA-28, hit its tower and crashed during heavy fog, killing the pilot on May 21.

A preliminary report by the NTSB says the plane hit the next to top guy wire of the tower at about 11:15 a.m. on May 21. The hit caused a major "dent" in the 450 foot tower at about the 405 foot level. The top 100 feet of the tower will have to be replaced. The transmission line is damaged at the top and arcs at full power. The station was back on at 40% power on June 4th, but it's vertical pattern is distorted because the antenna is tipped by 15 degrees. Adelphia cable could not receive the station at its headend south of Morgantown until it removed pads that were normally in the line.

Wayne McHenry, transmitter consultant, says that the contractor will build a cage-like reinforcement around the dented section of the tower so they can get their equipment above that point to remove the sections of the tower and the antenna. They believe the antenna itself can be repaired. Total cost of repair is expected to be \$300,000.00. The work should be completed by August.

The station feeds several translators around West Virginia. Some of the translators are fed by microwave dishes that can not be re-aimed until the guy wires are replaced and re-tensioned.

Next Meeting

DTV Transmission Seminar

Our chapter meeting is moved to the Zenith DTV Transmission Seminar on July 1st at WQED. There will be a \$55 charge for the seminar which includes lunch and a set of the course notes. There is a \$10 discount to \$45 for early registrations received by 6/24/03 but you can sign up at the door at the higher price. If you are going to do that why don't you call or e-mail Sam Zborowski so we can make sure we have enough food.

Parking will be available at no charge at Central Catholic High School which is next door to the WQED studios.

The seminar is scheduled 8:30 a.m.- 6 p.m. with a short SBE business meeting to follow.

So far we have five corporate sponsors, Azcra and Axcera, Agilent technologies, Rohde&Schwarz, and Tektronix and more are expected soon.

Checks can be made out to "SBE 20." Send to: Paul Mastorakis, Pathway Electronics/Enterprises, 15 Round Top Drive, Finleyville,

Continued on page 2

Next Meeting

Note change of date and time

Time: Tuesday, July 1
8:30 a.m. to 6 p.m.

Program: DTV Seminar
See article above for details on how to sign up

Place: WQED
Park next door at Central Catholic High School

Lunch Fee: Included with seminar fee



Chairman's Corner

DO YOU KNOW YOUR SCHEDULE FACTOR?

R.W. Sam Zborowski
samzborowski@stargate.net

We can generally imagine the steps to complete any given project much faster than the time it takes to actually complete the work. Various scheduling techniques have been used to estimate time and material costs and coordinate the work of multiple individuals and sometimes multiple organizations involved in the same project.

Depending on the size and complexity of the project, a schedule may be as simple as a few notes on a piece of paper or something as elaborate as a complex software program shared over a wide area network.

Scheduling techniques typically break a project down into many individual tasks that are each small enough to estimate the time to completion.

Regardless of the complexity or the scheduling techniques employed, a project schedule is only as accurate as the Individual task estimates. Managers often ask for task estimates that assume an individual's time is exclusively available to the project. This assumption is flawed due to the distractions of everyday life; we continue to receive new inputs via phone, e-mail, etc. Some of these new inputs are urgent and critical, requiring immediate attention. One way to deal with this situation is to apply a schedule factor to time estimates for project tasks. For example, distractions (work other than the project) may consume half of a typical workday. In this example, one would double the time estimate for each task to account for the real world versus the ideal case (no distractions from the project). Everyone has a different factor depending on individual circumstance. One can look back at previous projects to gain insight into what fraction of a typical workday was actually available and apply that factor to new project task estimates. So, what's your factor?

Speaking of schedules, we are a little late with the flyer to be distributed to more widely advertise our DTV transmission seminar at WQED studios on Tuesday, 7/1. As a result, the early registration discount date has been moved out to Friday, 6/24 to allow sufficient time to respond. Please try to use the early registration; it saves you \$10 and helps us estimate more accurately the number of books and amount of food we will need to have available! The seminar flyer will be composed and posted on the Zenith web site around 6/11. Zenith will distribute via e-mail to various broadcast individuals and organizations. We will also distribute via e-mail to some individuals and organizations located in this area. This seminar has been presented in a number of other cities where previous attendees have reviewed it very favorably. Anyone involved in

DTV transmission should consider attending. Please print out a copy of the flyer and post at your facility.

The Regional Convention on Thursday, 10/2 seems far away but the convention committee is working on many details at this time. One of the details involves soliciting speakers for the technical presentations. If you have a particular topic or speaker you would like to include, please contact Kim Cannon or Blake Richert.

Next Meeting continued from page 1

seminar at the Zenith web site. You can get to it by the zenith home page at www.zenith.com then select "digital broadcast" then select "trade shows/seminars".

The direct link is: <http://www.zenith.com/index.asp?url=/digitalbroadcast/tradeshows.html>



Ralph Seigler was one of 6 guys who retired last month after many years of service at WQED.



Chapter Twenty News is published monthly
(except during the summer) by

Society of Broadcast Engineers
Chapter 20
P.O. Box 16312
Pittsburgh, PA 15242-0312

Web page <http://www.broadcast.net/~sbe20>

Chapter 20 Officers

Chairman Sam Zborowski	724-223-9544
Vice Chair Blake Richert	412-824-3930
Secretary Nick Paoli	412-782-3399
Treasurer Paul Mastorakis	724-348-6681
Frequency Coordination Otto Schellin	412-237-1184
Convention Chair Kim Cannon	412-374-1700
Certification Tom Skubel	412-244-4435
FCC Committee vacant	
Newsletter Editor Gary Stewart	412-824-3930

Convention Shaping Up

Kim Cannon
CDR Systems
SBE 2003 Convention Chair
kcannon@cdrsys.com

First of all, a big thanks to Lori, Sam, Tony, Rick, Gary, Tom & Todd for taking time to bring your ideas to the table for a long meeting in the evening after work. We grouped together early May to talk about what to add to the show in October and what changes would take place. I have condensed it below. I think you will be happy with the results and really enjoy the show this year.

We will be changing the exhibit hours to 12-7 to allow more people to join us who can't make it out during traditional business hours. Engineering papers will still go on in the morning of the show prior to the floor opening. Tech sessions more attuned to desktop, 24p, visual graphics, audio, 3D, DVD, NLE and from the field topics by our respected peers like Rick Sebak and Alex Lindsay will take place during the course of the day to early evening. I am still in the process of negotiating some other really cool speakers and events. Pre-register or check the web site out for updates.

We need your help. Yes you!

We are looking for an old Houston Fearless tripod for our Museum of Broadcasting exhibit.

We want trucks. We would love to exhibit your mobile trucks at the show. Schools, system designers, sports and stations, please offer your support to the SBE and contact us to be there with your truck.

We are looking for volunteers to assist with setup the day before the show and sign-in for the day of the show. This would be a great experience for students. Please contact me to volunteer.

The SBE is a non-profit organization with a commitment to educating in broadcasting. To make this show bigger and better than ever, we need sponsors. Please contact me for details. Dealers, speak with your manufacturers. Broadcast accounts with direct manufacturer accounts, please talk to them about supporting a great show. It benefits everyone.

We will be honoring our retired broadcast



Sam Zborowski, Kim Cannon, Tony Buba, Rick Harris, Tom Bills, and Todd Kreps at the May convention meeting. Not shown, Lori Keffallas.

engineers on the evening prior to the show. I will need help in locating these individuals. Any help would be appreciated.

We also are looking for AV equipment for speakers and for the party honoring retired broadcast engineers. We are looking to borrow equipment for those two days. Contact me.

Call for Papers for engineers. Please contact Blake Richert for details.

Raffle items- See me.

Now to the good stuff for attendees.

We have pre-registration on-line for your pass to floor exhibits and tech sessions. We want early registration so it minimizes lines during the day of the show and we have a better head count for some other surprises. You will receive a free gift as special thanks for pre-registering on-line before July 31, 2003. Go to <http://www.broadcast.net/~sbe20/>.

Vendors: We also have discounts and better booth choices for those who book early by July 31, 2003. Your packages will be coming before the end of June. If you have not updated your e-mails and profiles, please do so immediately so you can take advantage of this offer. Again this is on-line. I know many contacts and e-mails have changed. So please make sure I have your correct information so you're in the loop!

Updates to our convention committee. New member: Tony Buba from Robert Morris University.

Congratulations to Sandy Pomerantz of Panasonic Broadcast Systems for his promotion to Panasonic's Education Sales. Unfortunately, due to time restrictions he will not be able to participate on the committee.

Well, I am swamped and my time is limited. I still have a real job, a 4-year-old and the SBE show packs are being put together to go out. Keep posted. Pre-register (Exhibitors and attendees). Have a great summer. And don't forget your sunscreen.

Last Meeting

Chapter 20 met at Gaetano's on Thursday May 15. There were about 15 present. Tom Bills spoke about the upcoming October 2nd Convention and Paul Byers spoke about the DTV Transmissions Seminar.

Harris Corporation Representatives were Dick Schumeyer and Darial Buechting. Dick went over IBOC, now called HD Radio, and showed how it works, what can be done with it, and the advantages and disadvantages. Two modes of operation are possible, Combined Mode and Common Mode. He talked about how to decide which mode to plan on using at your station. He showed typical station diagrams and costs for the different ways to do it. Harris has equipment for everything from processing to transmitters for both AM and FM.



Dick Schumeyer, Armand "Robbie" Roberts, and Blake Richert get the projector ready for the presentation at our last meeting.

National Museum of Broadcasting

During 1919-1920, Frank Conrad founded the broadcasting industry in a small red-brick garage behind his home on the borderline of Pittsburgh and Wilkinsburg, Pennsylvania. With bare wires, crackling spark coils, and homemade vacuum



Frank Conrad

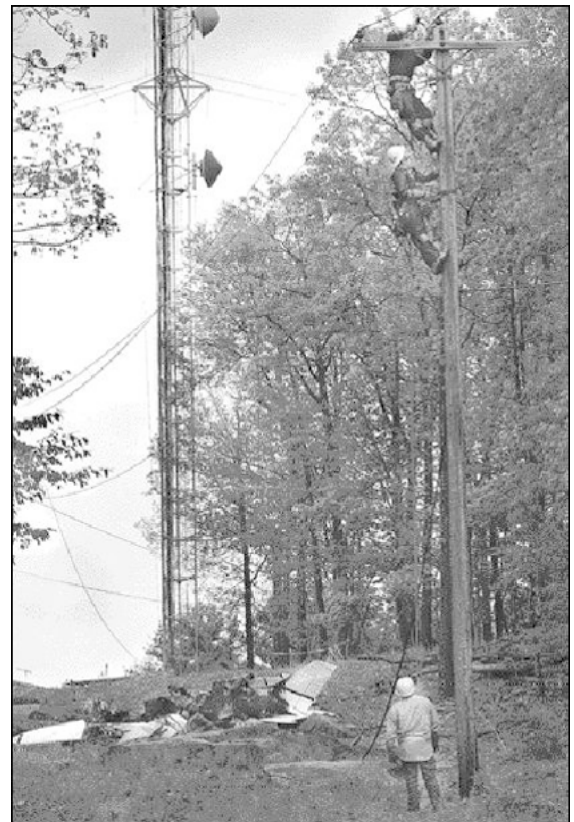
tubes, Conrad pioneered what is today a 53 billion dollar-per-year industry (in the USA alone) that has become the world's primary source of news and entertainment.

Yet, as the broadcasting industry has grown and prospered, the little garage where it all began has been neglected and forgotten. Today, while the workshops of more prominent inventors are preserved in museums, this "labor room" where the concept of modern communication was born may soon fall to the wrecking ball.

As the 80th anniversary of broadcasting has come and gone, a group of dedicated historians is determined to save the garage and restore and maintain it for future generations to enjoy. The garage has been dismantled and stored in Turtle Creek. The goal is eventually to make the garage the centerpiece of a National Museum of Broadcasting in Pittsburgh.

The web site is trfn.clpgh.org/nmb.

We plan on making the museum effort part of our October convention.



The plane fell on power lines next to WNPB-TV24's tower